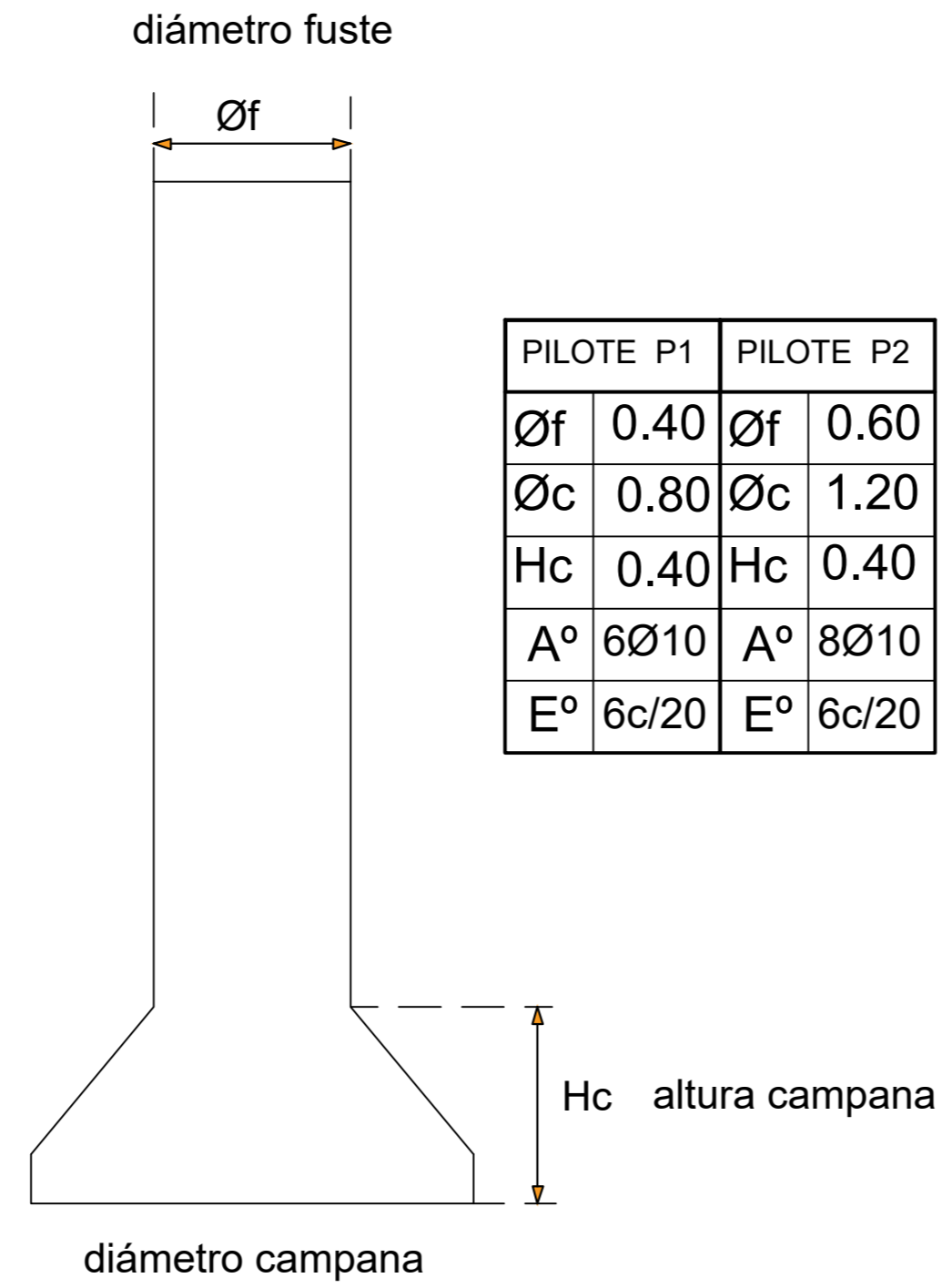
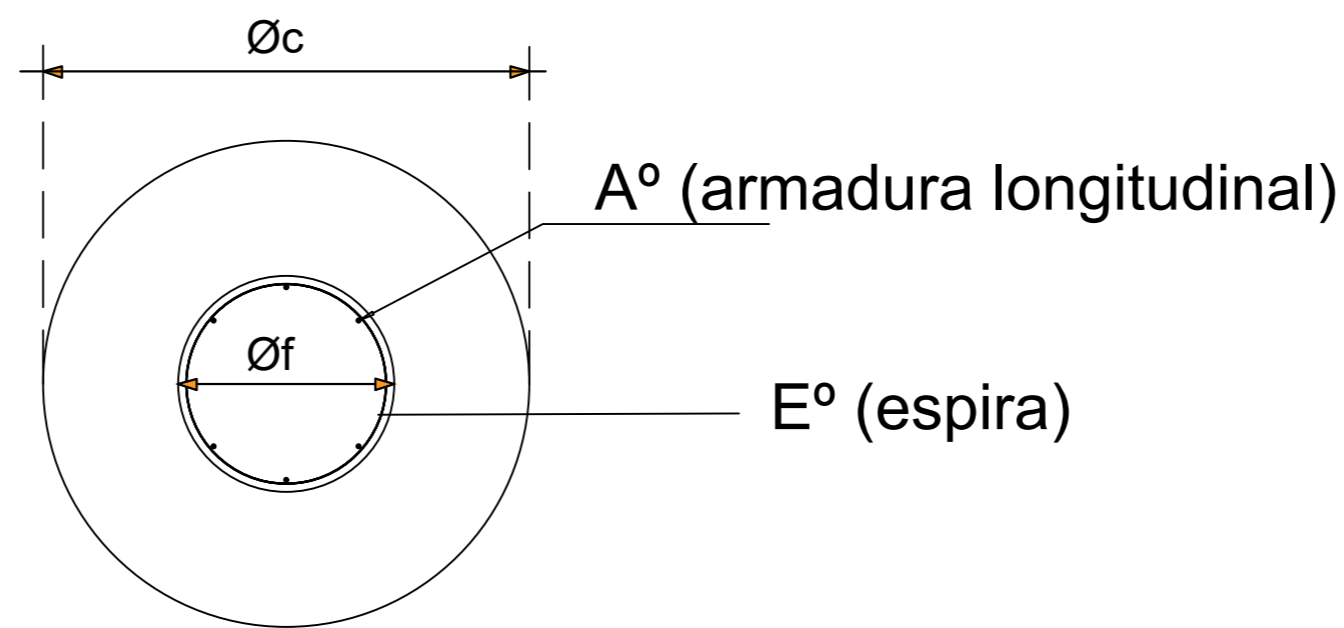
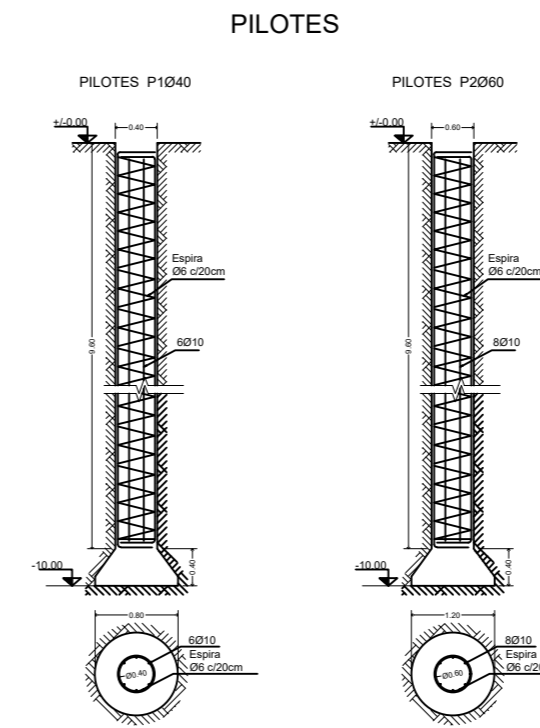


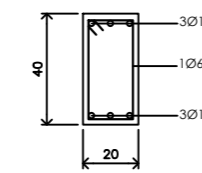
# FUNDACIONES



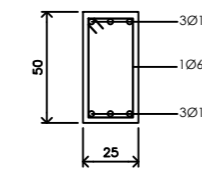
PILOTE P1		PILOTE P2	
Øf	0.40	Øf	0.60
Øc	0.80	Øc	1.20
Hc	0.40	Hc	0.40
A°	6Ø10	A°	8Ø10
E°	6c/20	E°	6c/20



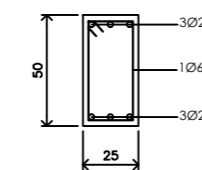
VT (20x40)



VR1 (25x50)



VR2 (30x60)



NOTA: Vigas Riostras en planillas de EXCEL

## TENSIONES

POZOS : Hormigón H13  
 RIOSTRAS : Hormigón H17  
 VIGAS COLUMNAS Y LOSAS : Hormigón H21  
 ESCALERA : Hormigón H21  
 Acero tipo III 420 Mpa